

VEGA B2B Configuration GUIDE

Scope of Document

This document will guide and provide step by step information regarding how to configure VEGA B2B.

Table of Contents

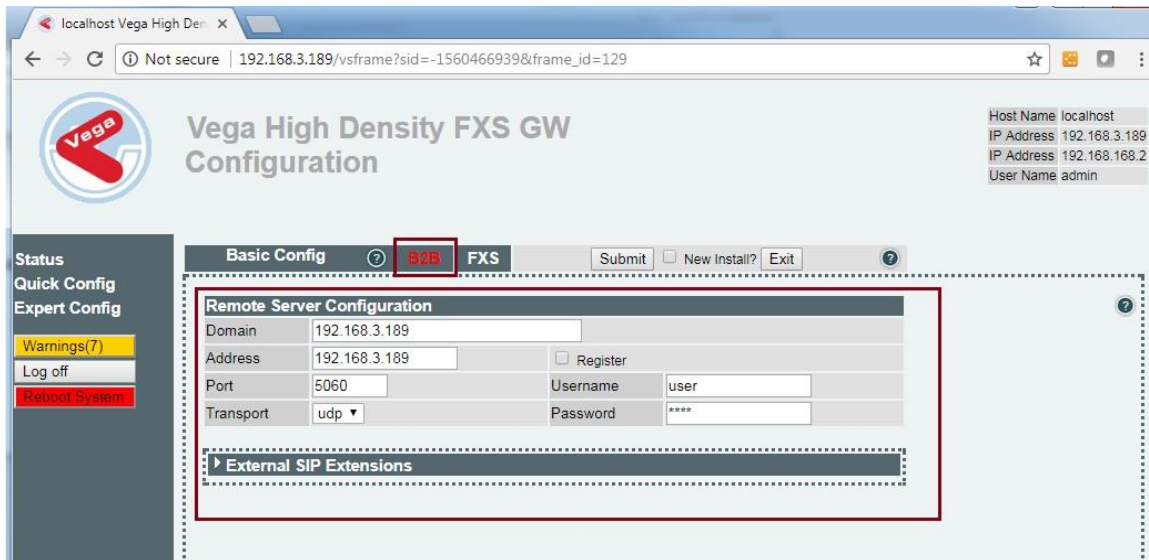
- [Prerequisite](#)
- [VEGA B2B Configuration](#)
- [B2B Configuration Parameters](#)

Prerequisite

VEGA B2B image must be installed properly before starting with VEGA B2B configuration. Please refer to VEGA B2B Installation document for more info regarding installation of B2B image on to VEGA.


VEGA B2B Configuration

B2B respective configuration is present in **Quick Config** with in **B2B section** as show below:



localhost Vega High Den x

← → ↻ ⓘ Not secure | 192.168.3.189/vsframe?sid=-1560466939&frame_id=129 ☆ 🗄 🗑 ⋮

 Vega High Density FXS GW Configuration

Host Name localhost
IP Address 192.168.3.189
IP Address 192.168.168.2
User Name admin

Status
Quick Config
Expert Config

Warnings(7)
Log off
Reboot System

Basic Config **B2B** FXS Submit New Install? Exit

Remote Server Configuration

Domain	192.168.3.189		
Address	192.168.3.189	<input type="checkbox"/> Register	
Port	5060	Username	user
Transport	udp	Password	****

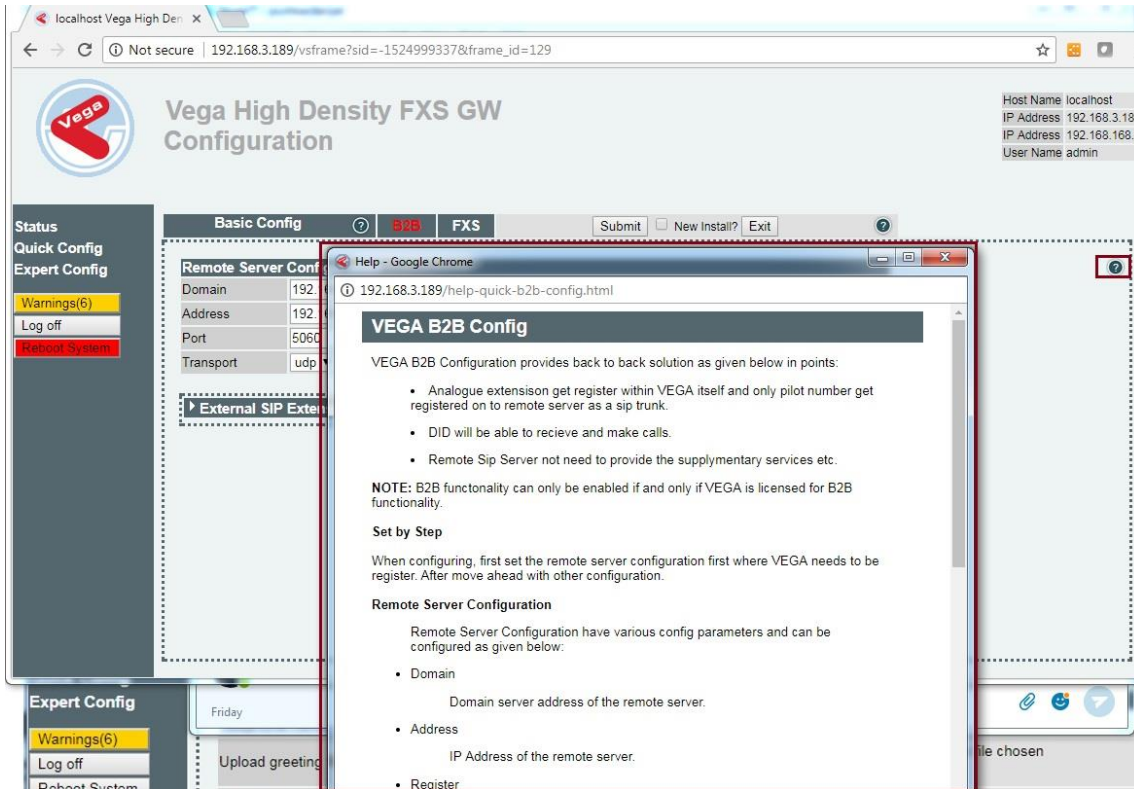
▶ External SIP Extensions

Please follow below steps in order to configure VEGA B2B properly:

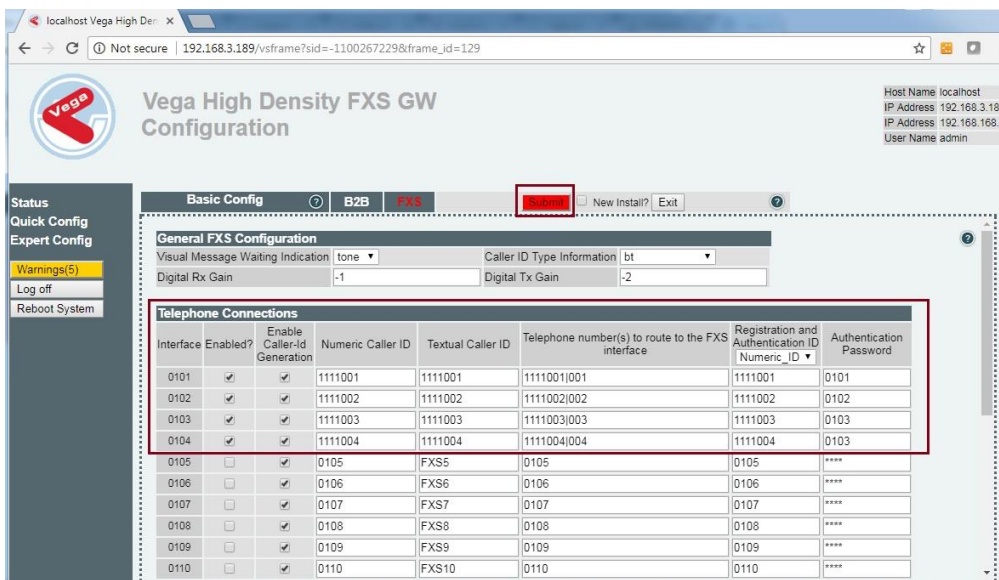
Step 1) First Configure Remote Server config values:

- Server Domain Address
- Server IP Address
- Transport
- Remote server port
- Registration (i.e. VEGA needs to be registered on Remote server or not)
- Username
- Password

For, further information regarding remote server parameters one can always click on help symbol as present within B2B configuration GUI as show below:



Step 2) Once done with Step 1, now go ahead and configure local extension setting if required. To change local extension settings, go-to "FXS" section as present within "Quick Config" Tab and change local extension settings as per requirement as shown below:



Below is the list of configuration parameters for local extension settings:

- Enabled: Whether the analogue interface/extension needs to be enabled or disabled.
- Enabled Caller-Id Generation: Whether Caller ID generation needs to be enabled or disabled.
- Numeric Caller ID: Extension caller ID number that will be sent to remote party for Extension identification.
- Textual Caller ID: Extension caller ID name that will be sent to remote party.
- Telephone number(s) to route to FXS interface: Numbers which needs to route to that FXS port /extension/
- Registration and Authentication ID: Number(ideally DID number) with which extension will get registered on VEGA itself
- Authentication Password: Password for successful registration.

📌 Configuration Information

It is advised for user to only change above settings if its required.
Like in last image only 4 ports are configured with DID as 1111001/1111002 and so on.

By Default B2B comes with setting with which all the local extension get register by itself on to VEGA. User just need to do the Remote server configuration.

Step 4) Once B2B configuration is done press **Submit** and then reboot VEGA box.

B2B Configuration Parameters

Parameters		Description
GUI	CLI	
General		
Enable B2B	quick.b2b.enable	To enable B2B mode
Remote Server Configuration Settings		
Password	quick.b2b.remote.auth_pwd	Remote server authentication password
Username	quick.b2b.remote.auth_username	Remote server authentication username (pilot number)
Address	quick.b2b.remote.pbx_address	Remote server address
Domain	quick.b2b.remote.pbx_domain	Remote server domain
Port	quick.b2b.remote.pbx_port	Remote server port
Transport	quick.b2b.remote.pbx_transport	Remote server transport
Register	quick.b2b.remote.register	Registration enable for remote server to register username/pilot number

Once configuration is completed to check if the configuration is proper or not please refer to B2B Debugging document.