



Vega 400 Quick Start Guide

Congratulations on your purchase of a Vega 400 Voice Over IP gateway. This Quick Start guide will assist you through the process of configuring your new gateway.

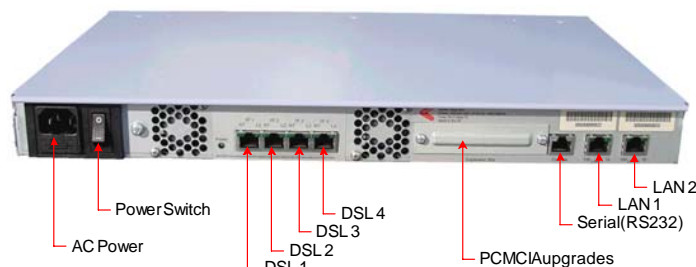
If you would like further details about the parameters you are configuring or you want to know more about the capabilities of your Vega 400 please visit www.VegaAssist.com and start by looking at the Quick SIP Config reference guide available in the Vega 400 > Configuration section.

1. Before you start

We advise that before connecting and using your Vega 400 for the first time, you visit the www.VegaAssist.com website and read the 'Safety and Compliance Information' document which contains important details that you should be aware of.

2. Connecting your Vega 400

Connect your Vega 400 using its telephony, Earth point, power and LAN connections.



With all models of Vega 400 all 4 telephony connections (DSL 1 to DSL 4) are always available for use. The capacity of the Vega 400 you have purchased just affects the number of simultaneous calls that can be made to / from the VoIP interface of the Vega 400. All Vega 400s allow you to connect to all 4 telephony interfaces.

The interface layout is:

Vega 400:

DSL 1	DSL 2	DSL 3	DSL 4
IF:0401	IF:0402	IF:0403	IF:0404

The Earth point on your Vega must be connected to a suitable earth. It serves a dual role as a safety Earth and it also stops noise on telephone lines in electrically noisy conditions.

LAN interfaces 1 and 2 may be connected to 10, 100 or 10/100 Mbps hubs, routers or switches.

It is important that if both LAN 1 and LAN 2 are to be used that they are connected to separate (non-overlapping) subnets.

3. Getting an IP address

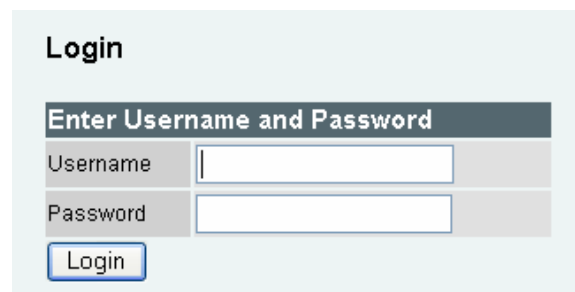
The Vega 400 uses DHCP to pick up IP addresses for its LAN interfaces. Each LAN interface is handled independently; if the LAN interface fails to get an IP address from the DHCP server, for example, because there is no DHCP server on the LAN, then the Vega will default the IP address of that LAN interface to 169.254.x.y where x and y are the decimal versions of the last two bytes of the LAN MAC address. The LAN 1 MAC address can be found underneath the barcode on the rear of the Vega 400 gateway. The LAN 2 MAC address can be found beside the barcode. (The LAN 2 MAC address is the LAN 1 MAC address plus 1).

A calculator that will calculate the 169.254.x.y address from the MAC address is available in the Vega Tools section of www.VegaAssist.com

4. Logging into the Vega

Enter the IP address of your Vega 400 into the address line of your web browser and press enter or select 'Go'.

The Vega will present you with a login screen:



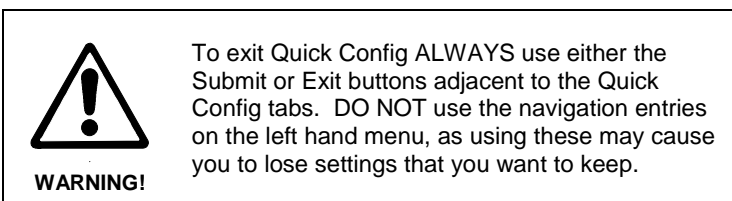
Enter the username and password.

By default these are set to:

Username = admin
Password = admin

5. Configuring your Vega

Select Quick Config. If a warning message appears informing you that that there is already configuration applied, you can remove the existing settings and start from the beginning by selecting 'Continue' then ticking the 'New Install ?' option. This will ensure that any old, unwanted configuration is removed as you submit your new settings. Do not tick this option if you are simply amending existing configuration.



a) Basic Config

Start by selecting the basic config tab.

If this is a new installation, ensure that the 'New Install ?' option is ticked.

Select the country and then choose which emergency numbers are appropriate for the location of the Vega.

Now select the LAN settings and then the codecs to use for VoIP calls.

b) VoIP

Choose whether the Vega is going to route calls to a VoIP service provider or Proxy, or alternatively whether the Vega is going to route calls to up to 8 specified VoIP devices.

If the VoIP service provider / proxy option is chosen then specify the proxy and registrar details. These will be provided by your VoIP service provider / proxy administrator.

If registration is required, ensure that you select 'per gateway' registration and then configure the registration and authentication ID and authentication password immediately below.

For Specified VoIP device mode, specify the IP address of the device and the list of phone numbers it supports.

All IP address entries may be provided as dotted decimal values (a.b.c.d) or as DNS names (e.g. SIP.VegaStream.com).

The list of telephone numbers is a comma or space separated list of telephone numbers to be routed to that destination. The telephone numbers may include regular expression characters to make them telephone number ranges rather than just single telephone numbers.

Regular expressions

- . Any single digit
- [abc] Range of digits 'a', 'b' and 'c'
- [a-d] Range of digits 'a' thru 'd'
- [^abc] Range of digits excluding 'a', 'b' and 'c'
- * Previous character or regular expression repeated 0 or more times
- + Previous character or regular expression repeated 1 or more times
- ? Previous character or regular expression repeated 0 or 1 times
- \ Turn off the regular expression meaning of the following character, e.g. \< * = DTMF *

e) E1 / T1 config

Start by configuring the Port Setting section. As these values relate to the physical interface connectivity, once you have set these values you should never have to return to reconfigure them.

Choose the required protocol; the framing will usually be set correctly by leaving the Vega set to 'auto'.

Select NT (NeTwork) on each Vega interface that is connected to a PBX interface which is configured as TE (Terminal Equipment). Ensure NT is not ticked if the interface is connected to the ISDN network (which is NT) or is connected to an NT interface on the PBX.

The Number of Channels setting only needs to be changed from auto if the interface is being plugged into a 'fractional E1' or a 'fractional T1' where only a proportion of the full number of channels available on the E1 or T1 are being used.

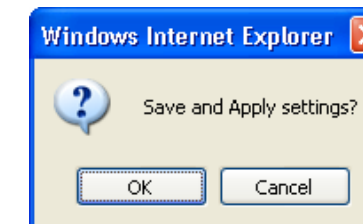
Channel allocation selects the fill pattern to use; the choice of value will depend on the settings of the attached device:

Attached device setting	Vega setting
Linear Up / Lowest fill	Linear Down
Linear Down / Highest Fill	Linear Up
Round Robin	Round Robin

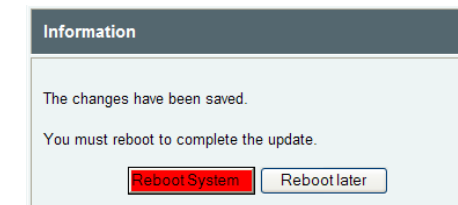
Now configure the Telephony Connection details.

f) Saving your configuration

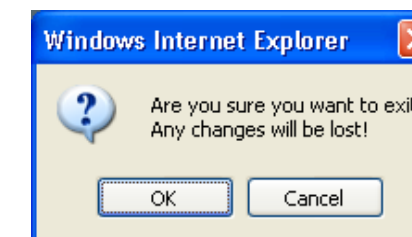
Press Submit to save, apply and activate the changes you have made using Quick Config. Pressing Submit will bring up a confirmation request. Select OK to continue and activate the changes or Cancel to take you back to the Quick Config pages.



Selecting Ok to the above question will activate most Quick Config settings. Some parameters, like the IP address of the Vega, will however require the Vega to be re-booted. If a reboot is required the Vega will ask whether this should occur immediately or whether you wish to do it manually later. If later is selected, the reboot button on the left hand side menu will be left RED to indicate that a reboot is still required to activate certain new parameters.



If you decide that you want to abandon the changes just made in Quick Config then select Exit. A confirmation request will be displayed, select OK to exit or cancel to return to the Quick Config pages.



6. Archive the configuration

Save the configuration in an archive, off the Vega, by selecting Expert Config > System, then in the Configuration section select the Download button and save the file config.txt.

Help!

If you encounter problems, please refer to www.VegaAssist.com or contact your Vega 400 reseller directly.